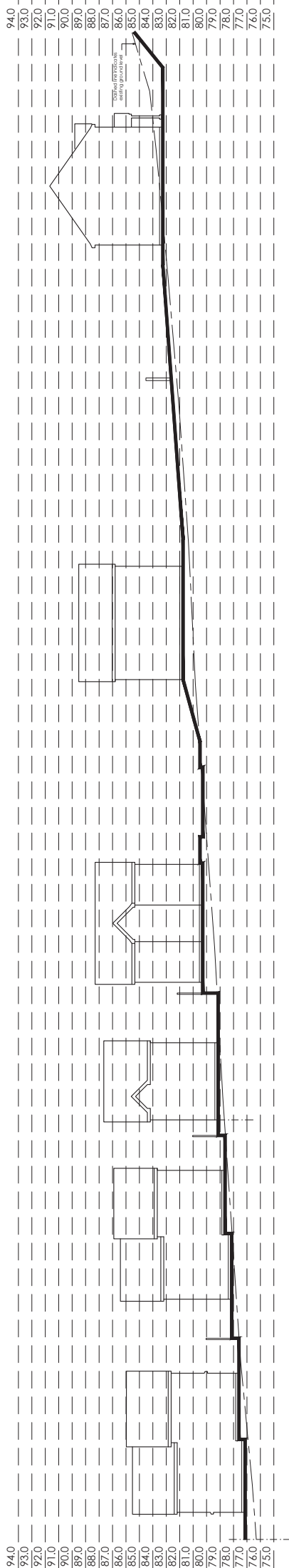
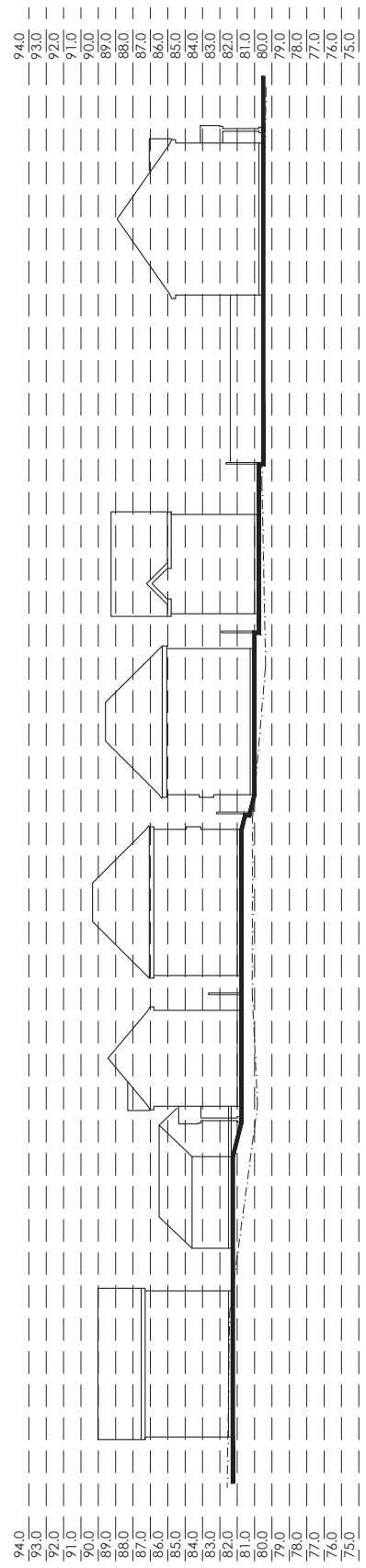


# The Elms, Whittle-Le-Woods.

- The copyright of this drawing belongs to MFSL Planning & Design Ltd. It is not to be copied or reproduced in any form without its express permission.
- Do not scale from this drawing. Work to stated dimensions only. All dimensions to be checked on site prior to the execution of any work.
- For the avoidance of doubt, all dimensions are measured to wall face unless otherwise stated.
- Where any discrepancy is found to exist within or between any drawings, the drawing shall be deemed to prevail over any other drawings.
- MFSL Planning & Design Ltd. shall be liable for any use of drawings and documents for any purpose other than that for which they were originally prepared by or on behalf of MFSL Planning & Design Ltd.



1874 Plot 28 FFL: 77.50	2674 Plot 29 & 30 FFL: 76.50	3000 Plot 31 FFL: 73.50	48157 Plot 32 FFL: 81.25	Proposed Open Road	5850 Plot 33 FFL: 82.00	Rear Garden	Rear Garden	5890 Plot 32 FFL: 83.50
-------------------------------	------------------------------------	-------------------------------	--------------------------------	-----------------------	-------------------------------	-------------	-------------	-------------------------------



31830 Plot 3 FFL: 66.50	Proposed Garage FFL: 62.50	33830 Plot 6 FFL: 62.00	481265 Plot 8 FFL: 61.25	481265 Plot 9 FFL: 61.00	38900 Plot 10 FFL: 68.75	Rear Garden	38900 Plot 10 FFL: 68.75
-------------------------------	-------------------------------	-------------------------------	--------------------------------	--------------------------------	--------------------------------	-------------	--------------------------------

Date	13/03/16	Drawn	05	Rev	A
Scale	1:100	Block	AC	Sheet	
<p>1200 @ A2 01/05/2014 For Approval</p> <p>MFSL Planning &amp; Design Ltd 10, Whitehouse Lane, Whittle Le Woods, Leeds LS21 3JN. 0113 255 1100</p>					

**MFSL**  
PLANNING & DESIGN LTD

**SITE SECTIONS**

The Elms,  
Whittle-Le-Woods.

MFSL Planning & Design Ltd  
10, Whitehouse Lane,  
Whittle Le Woods,  
Leeds LS21 3JN.  
0113 255 1100